

# WESTERN DOWNS

GREEN POWER HUB

## Community Information Booklet

NEOEN



[www.westerndownsgreenpowerhub.com.au](http://www.westerndownsgreenpowerhub.com.au)



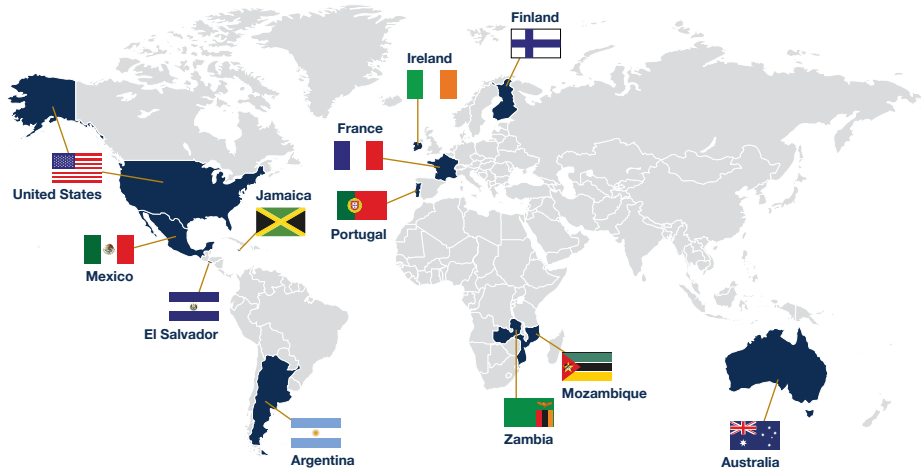
[contact@westerndownsgreenpowerhub.com.au](mailto:contact@westerndownsgreenpowerhub.com.au)



## GLOBALLY

The company is headquartered in Paris, France, and has two Australian offices – in Sydney and Canberra.

We operate across renewable energy technologies including solar, wind and storage in Europe, Central America, Africa, the Middle East and Australia.



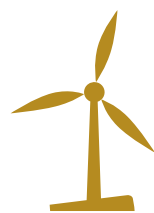
## LOCALLY

Neoen Australia began operations in 2012. Over the last seven years the company has initiated the development of more than 1GW of solar and wind projects through organic growth, local partnerships and strategic acquisitions.



Neoen produce green electricity from renewable sources such as sunlight and wind using mature, tried and tested technologies. We are also leaders in energy storage.

# WORLD'S LARGEST BATTERY HORNSDALE POWER RESERVE



**LESS THAN SIX  
MONTHS**  
FROM PROJECT  
INCEPTION TO  
COMPLETION

- 100MW Lithium-ion battery located next to Hornsdale Wind Farm
- Owned and operated by Neoen
- Installed and maintained by Tesla

- Provides grid stability services
- Saved SA energy consumers \$50 million in 2018
- 50MW Stage 2 now under construction



**REDUCES RISK  
OF BLACKOUT**  
IN SOUTH  
AUSTRALIA





## DELIVERING CHEAPER ENERGY FOR INDUSTRY



### LAVERTON STEELWORKS VICTORIA

Laverton Steelworks have agreed to take power from Neoen's 128 MW Numurkah Solar Farm under a 15-year deal. GFG Alliance's Executive Chairman Sanjeev Gupta said the deal would help lower energy costs at Laverton.



### DEGRUSSA MINING WESTERN AUSTRALIA

DeGrussa is the largest off-grid solar battery storage project in Australia. It powers a gold and copper mine in remote WA. Commissioned in June 2016, it provides a solar and storage solution to the majority of the mine's daytime electricity requirements, offsetting up to 20% of total diesel consumption annually.



### NECTAR FARMS VICTORIA

Bulgana Green Power Hub, consisting of 196 MW of wind backed by a 20MW battery, is co-located with agri-business Nectar Farms to provide secure and affordable energy. Nectar Farms is using the latest in hydroponic glasshouse and plant technology to create a 10 hectare state of the art facility and over 130 local jobs.





## WESTERN DOWNS GREEN POWER HUB OVERVIEW



Will span across  
**1,545 hectares**  
of land



**150MW**  
battery storage



**400MW**  
solar farm



Will be located  
near the  
**Kogan Creek  
Power Station**



High solar  
irradiance of  
**1,968 W/m<sup>2</sup>**



# WESTERN DOWNS

## GREEN POWER HUB

### PROJECT LIFE CYCLE

#### PHASE 1: DEVELOPMENT

Choose site

Meet local land owners

Meet traditional owners

Environmental surveys, local input, design

Community Info Day

Appoint contractors

Grid connection agreement

Government approval

Public exhibition

Government submission

Local jobs session

#### PHASE 2: CONSTRUCTION

Arrange finance

Prepare for construction

Hire workers

Build

Regular community updates

#### PHASE 3: OPERATION

Testing & accreditation

Launch benefit sharing program

Community celebration

Plant trees

Generate electricity

Grid connection

Operations & maintenance

Site visits & open days

Environmental monitoring

Land management & farming continues

Annual benefits sharing program

Plant operates for 25+ years

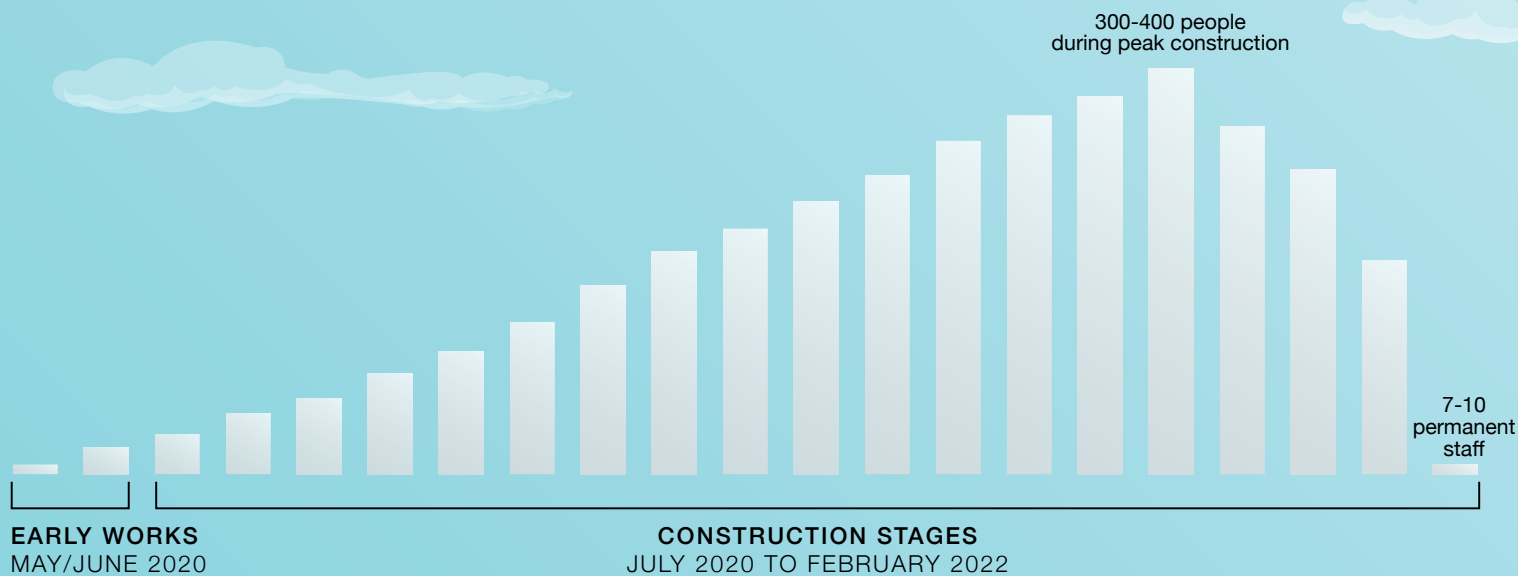
Renewal or decommission?

Decommission

Back to phase 1



# WHAT HAPPENS DURING CONSTRUCTION



## IN THE TOWN

### Increased numbers

As early construction works commence, you will start to see more project and construction staff around town.

The local service economy will see an increase in their business.

At peak, the numbers of construction staff will be up to 300 to 400 people.

We expect construction staff to come from surrounding towns Chinchilla, Dalby and Tara, as well as the wider Toowoomba and Brisbane areas.



## ON THE ROADS

### Road upgrades

The project will be accessed via Sixteen Mile Hall Road, which in turn will be accessed via Kogan Condamine Road.

Prior to construction, extensive road upgrades will be made to Sixteen Mile Hall Road to ensure that it is a graveled pavement road. Upgrades to the road will be in-line with Western Downs Regional Council standards.



## AT THE SITE

### Surveys being conducted

Currently undergoing extensive consultation with the Barrangum Native Title Group – Aboriginal cultural heritage survey, while a Cultural Heritage Agreement has been agreed and signed.

Construction hours will be Monday to Saturday from 6am to 6pm.

## OUR TEAM




NEOEN

### DEVELOPERS, OWNERS & OPERATORS

Development Manager: Anne Frederic

Construction Manager: Laszlo Csanyi

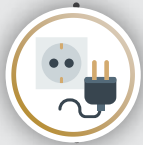
Community Relations Manager: Lisa Stiebel



EPC contract  
will be awarded  
in April 2020

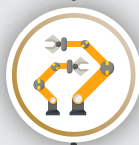
### ENGINEERING, PROCUREMENT & CONSTRUCTION CONTRACTOR

Overall control of the site, managing deliveries of equipment and design of the solar farm.



#### ELECTRICAL INSTALLATION SUBCONTRACTOR

Electrical installation of AC and DC cable systems and PV module cables.



#### CIVIL & MECHANICAL SUBCONTRACTOR

Site establishment, road and drainage works. Mechanical installation of the PV panels and tracking system.



#### SUBSTATION SUBCONTRACTOR

Design and construction of the solar farm's substation including high voltage (HV) equipment.



# EMPLOYMENT OPPORTUNITIES

## Engineering, Procurement & Construction Contractor

### General roles available

Administration  
Security  
Waste Recycling

### Electrical Installation Subcontractor

#### Roles available

Electricians  
Electricity installation  
Electrical Trade Assistants

### Civil & Mechanical Subcontractor

#### Plant Operators roles available

Loader  
Excavator  
Grader  
Roller  
Dump Truck  
Watercarts  
Forklift and/or  
Telehandler  
Trucks  
Pile Driver

#### Labour roles available

Concreters  
Pipelayers  
General Labour

### Substation Subcontractor

#### Roles available

Administration  
Civil  
General Labour  
Electricity installation  
Electrical Trade Assistants

# SUPPLIER OPPORTUNITIES

## Goods and services we expect to be procured with a planned start date of June/July 2020:

Accommodation  
Cleaners  
Computer  
Network Support  
Crane (Minor Lifts)  
Earthworks Plant (Wet and Dry Hire)  
Fencing and Gates  
Food and Catering Service  
Freight  
Fuel  
Material Testing  
Mechanical Fitter/Maintenance  
Quarry Products

Safety Products (Local)  
Septic Pump Out Services  
Small Equipment Hire  
Transport (Minor)  
Waste Management (Liquid)  
Waste Management (Solid)  
Water (Construction)  
Water (Potable)  
Concreters  
Concrete Supply  
Welding & Engineering Fabrication (Site Services)  
Operation & Maintenance Facility Construction

Anyone interested in working on the project, can email  
[contact@westerndownsgreenpowerhub.com.au](mailto:contact@westerndownsgreenpowerhub.com.au) with the following information:

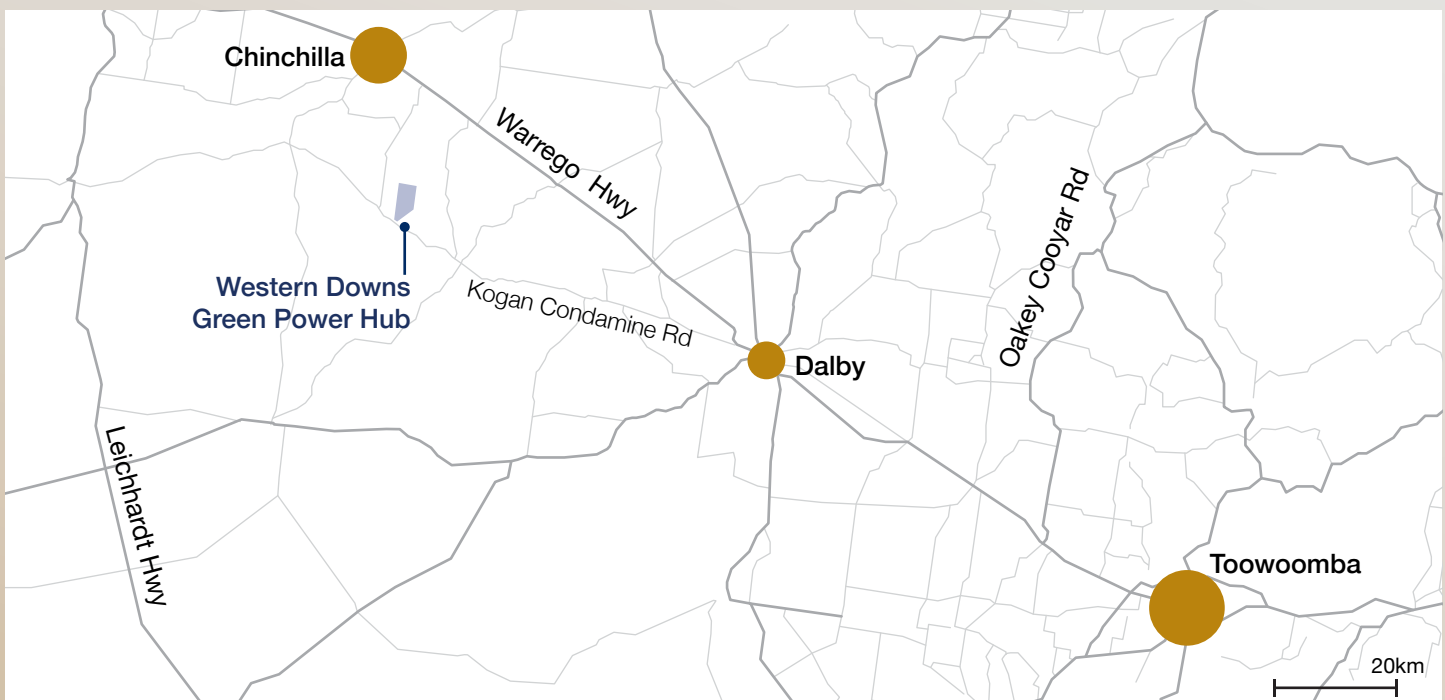
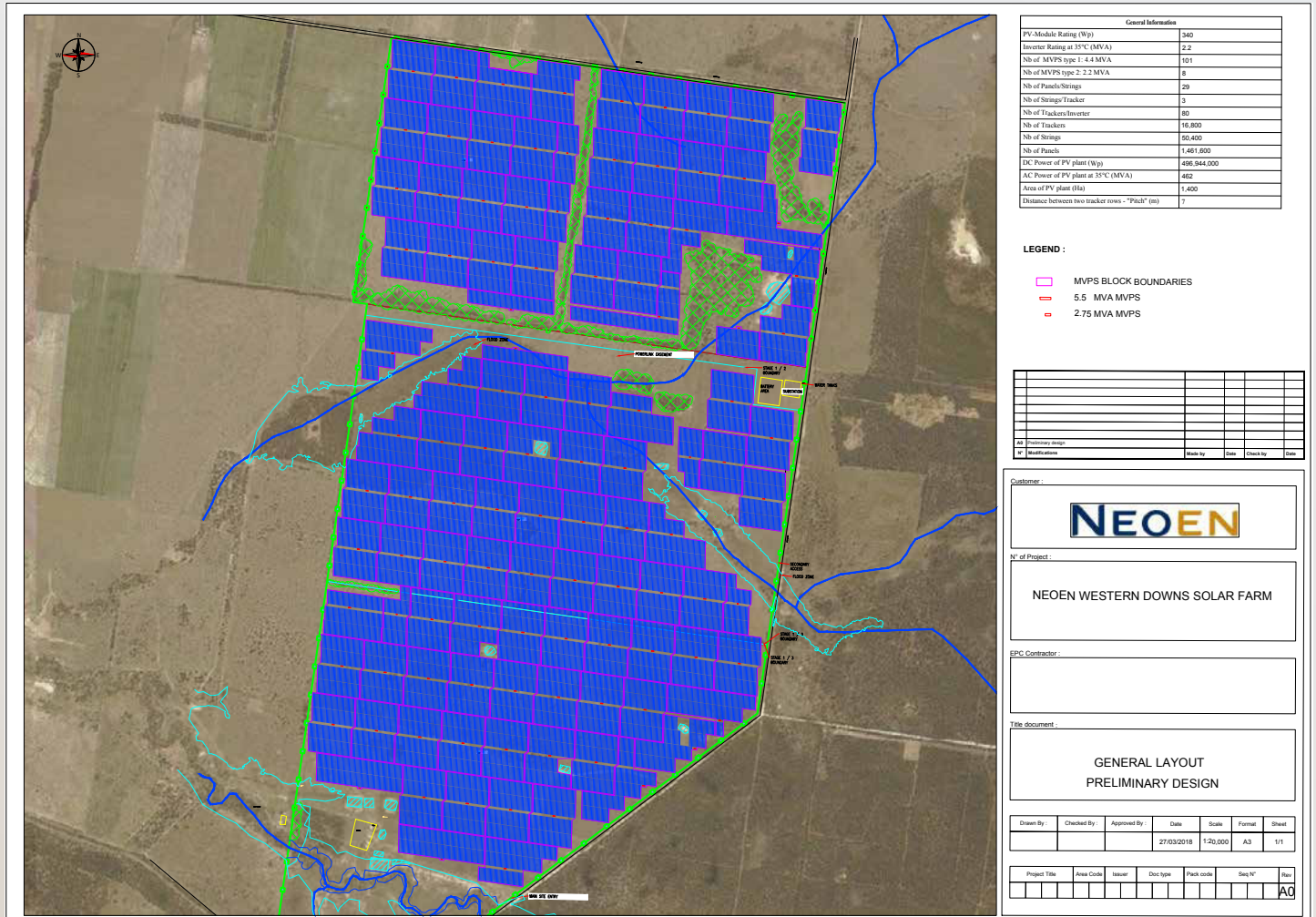
#### Name and Contact Details

#### Service Area – Electrical/Mechanical/Civil

#### Brief Summary of skills and experience

Details will then be sent on to the appropriate person within one of our contractors.

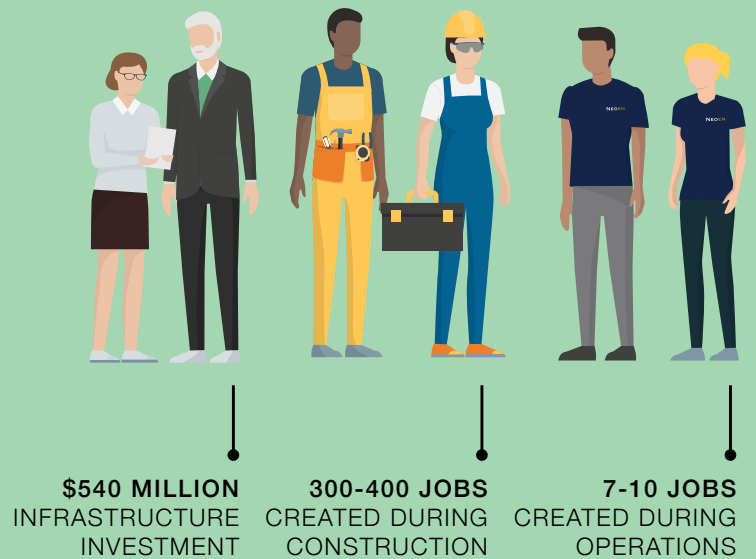
## PROJECT LAYOUT & LOCATION



## LOCAL COMMUNITY BENEFITS



## ECONOMIC BENEFITS



## ENVIRONMENTAL BENEFITS

ABILITY TO PRODUCE APPROXIMATELY  
**1,031,400 MWh**  
PER YEAR WHICH IS EQUIVALENT TO:

DISPLACING  
**825,120 TONNES**  
OF CO<sub>2</sub> EMISSIONS

POWERING  
**224,364 HOMES**

REMOVING  
**23,092 CARS**  
FROM THE ROAD

PLANTING  
**8,457,480 TREES**




# WESTERN DOWNS

GREEN POWER HUB

 [www.neoen.com/en](http://www.neoen.com/en)

 Natasha Lawrence, Project Manager

 0499 490 330

 [natasha.lawrence@neoen.com](mailto:natasha.lawrence@neoen.com)